

Rottweil, 25.05.2022

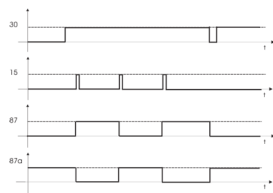
Toggle Relay time limited M3 24 V (1.001.29x.xxE)

The Toggle Relay is used to switch loads on and off via pushbutton operation.

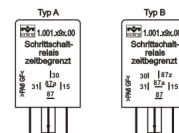
Circuit diagram S1: With the step switching relay a consumer can be switched via a button. If a positive/negative impulse is applied to Terminal 15, the relay switches and holds itself. Another impulse is switched on again (Power surge switch or toggle flip-flop). The terminal 15 is debounced. Circuit diagram S2: The contacts are separate from the control and can therefore be used in links. In this variant, the relay contact is completely potential-free and thus capable of switching alternating voltage. Housing forms can be found in the section housing and basic body.

Product images

1. Function diagram



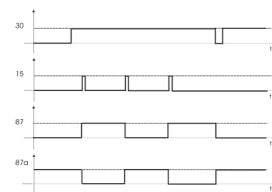
4. Design



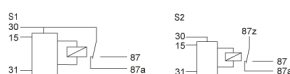
2. Toggle Relay time limited M3 24V



5. Function diagram



3. Connection diagram





General Data

Name	Value
Dimensions	30 × 30 × 40 mm
Housing material	Plastic
Type-approval number	05 7282
Type-approval	E1 - ECE R10
Number of pins	5
Operating voltage	24 V

Technical Data

Name	Value
Number of pins	5
Processor	8 bit
Temperature range	-40 to 85 °C
Protection class	IP53
Operating voltage	24 V
Max. output current (87, 87a)	30 A
Quiescent current (24V)	1 mA
Time delay	By customer request
Lifetime	Electrical: 100.000 by 15A
Programming system	MRS Realizer

Order options

Name	Type	Model	Connection diagram	Order no.
Toggle Relay time limited M3 24 V 30 A	A	positive edge triggered	S1	1.001.291.xxE
Toggle Relay time limited M3 24 V 30 A	A	negative edge triggered	S1	1.001.292.xxE
Toggle Relay time limited M3 24 V 30 A	B	positive edge triggered	S2	1.001.293.xxE
Toggle Relay time limited M3 24 V 30 A	B	negative edge triggered	S2	1.001.294.xxE



MRS Electronic GmbH & Co. KG
Klaus-Gutsch-Str. 7
78628 Rottweil
info@mrs-electronic.com
Tel.: +49 741 2807-0
www.mrs-electronic.com

Name	Type	Model	Connection diagram	Order no.
Please set an "E" behind the article number for english printing e.g. 1.001.291.XXE				1.001.291.X XEE

Accessories

Required accessories	Article number
Software programming tool MRS Realizer	1.100.000.01
Socket ST FL 9-pin 5 x 6.3 / 4 x 2.8	1.017.002.00
Socket package watertight 40 mm	1.017.010.40
FASTON terminal for latching 2.8 mm 0.5 – 1.0 mm ²	105292
FASTON terminal for latching 6.3 mm 1 mm ²	102355
FASTON terminal for latching 6.3 mm 1.5 – 2.5 mm ²	103064