



Rottweil, 17.05.2021

Toggle Relay 12 V (1.001.10x.001E)

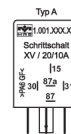
The application area of toggle relays is the switching on and off of loads via push-button operation. With the toggle relay a load can be switched by a push button. If a pulse is detected at terminal 15, the relay switches and holds itself. With a further impulse it switches again. (toggle switch or toggle flip-flop). Terminal 15 is debounced. For housing types see chapter housing and base body. These toggle relays are not programmable.

Product images

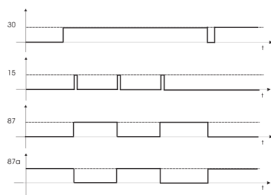
1. Toggle Relay mechanical 12 V



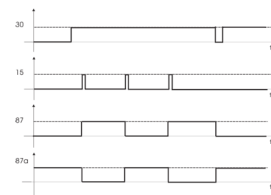
4. Design



2. Function Diagram



5. Function Diagram



3. Connection Diagram





MRS Electronic GmbH & Co. KG
Klaus-Gutsch-Str. 7
78628 Rottweil
info@mrs-electronic.com
Tel.: +49 741 2807-0
www.mrs-electronic.com

General Data

Name	Value
Dimensions	30 × 30 × 40 mm
Housing material	Plastic
Number of pins	5
In-/Outputs (total)	1
Operating voltage	12 V

Technical Data

Name	Value
Number of pins	5
In-/Outputs (total)	1
Outputs (total)	1
Relay outputs	1
Temperature range	-40 to 85 °C
Protection class	IP53
Operating voltage	12 V
Max. output current (87, 87a)	20 A
Quiescent current (12V)	1 mA
Lifetime	> 10.000.000

Order options

Name	Type	Model	Connection diagram	Order no.
Toggle Relay 12 V 20/20 A	A	KL 15 positive switching	S1	1.001.100.00 1E
Toggle Relay 12 V 20/20 A	A	KL 15 switching to ground	S1	1.001.102.00 1E

Accessories

Required accessories	Article number
Socket ST FL 9-pin 5 x 6.3 / 4 x 2.8	1.017.002.00



MRS Electronic GmbH & Co. KG
Klaus-Gutsch-Str. 7
78628 Rottweil
info@mrs-electronic.com
Tel.: +49 741 2807-0
www.mrs-electronic.com

Required accessories	Article number
Socket package watertight 40 mm	1.017.010.40
FASTON terminal for latching 2.8 mm 0.5 – 1.0 mm ²	105292
FASTON terminal for latching 6.3 mm 1 mm ²	102355
FASTON terminal for latching 6.3 mm 1.5 – 2.5 mm ²	103064